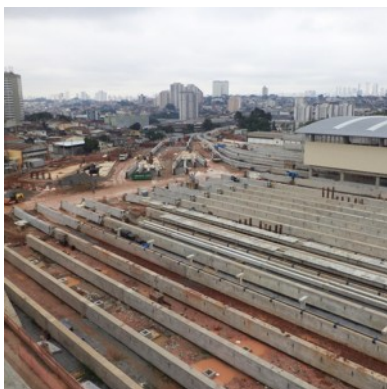




PÁTIO ORATÓRIO RAIL MAINTENANCE YARD – TRACK-SWITCHES

BASE DESIGN; FINAL DESIGN - STRUCTURES



Client: Companhia do Metropolitano de São Paulo, CEML – Companhia do Expresso Monotrilho Leste, Planservi – Engenharia, Ltda.

Location: Monorail - Line 15 (silver) of the São Paulo Metro - Brazil

Design date: 2012 - 2013

Construction date: 2014 - 2015

Services: Base Design; Final Design - Structures

Summary:

10 elevated or at-grade reinforced concrete structures for the monorail track-switch, having particularly demands for rigidity due to the functionality deformation limits:

- 4 elevated track-switches supported by 3 to 5 piers, each founded by 4 Ø1.20 m piles;
- 6 at-grade track-switches supported by 17 Ø1.00 m piles.

[SEE ONLINE](#)