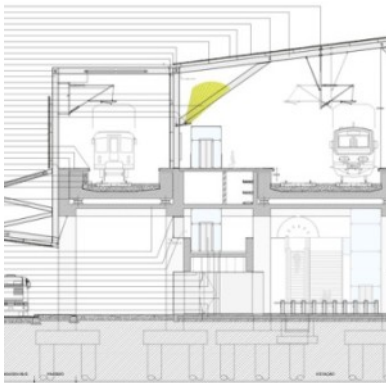
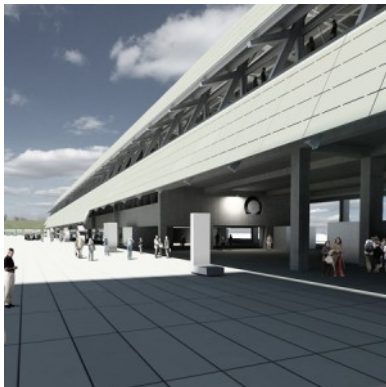




HIGH-SPEED RAILWAY NETWORK – LISBON - MADRID LINK, LISBON / POCEIRÃO SECTION (INCLUDING A THIRD BRIDGE OVER TAGUS RIVER)

BASE DESIGN FOR A TENDER PROCESS (PRIMARY AND ALTERNATIVE SOLUTIONS)



Client: RAVE / TAVETEJO / JAR – Arquitectos, SA

Location: High-speed Railway Network – Lisbon - Madrid link, Lisbon / Poceirão Section (including a Third bridge over Tagus River)

Design date: 2009 - 2009

Services: Base Design for a tender process (Primary and Alternative solutions)

Summary:
Structural design of Barreiro station.

23 other engineering structures (over and underpasses, culverts and cattle passes)

Coordination of architecture and specialties in Lavradio Station.

Project Coordination of other specialties:

- Environment
- Geology-geotechnics
- River and sea hydraulics
- Topography
- Expropriation

[SEE ONLINE](#)