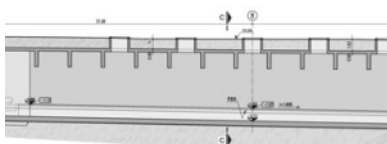
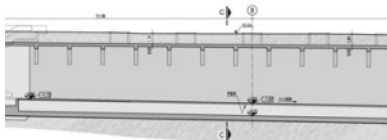
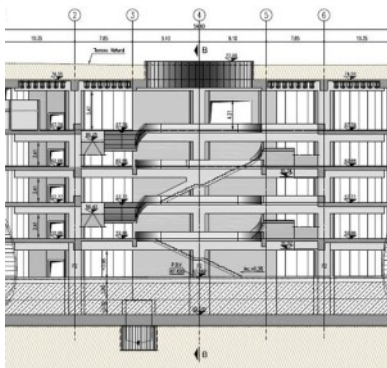




CAMPO ALEGRE LINE

TECHNICAL ADVISORY FOR THE ELABORATION OF THE PRELIMINARY STUDY/ REFERENCE SOLUTIONS IN THE SPECIALTIES OF LAYOUT, TUNNELS, STATIONS (EXCAVATION, STRUCTURES AND ELECTRO MECHANICS), GEOLOGY-GEOTECHNICS AND SPECIAL STRUCTURES.



Client: Metro do Porto – Project Division

Location: Metro Do Porto

Design date: 2010 - 2011

Services: Technical advisory for the elaboration of the Preliminary Study/ Reference Solutions in the specialties of Layout, Tunnels, Stations (excavation, structures and electro mechanics), Geology-geotechnics and Special Structures.

Summary:

New line having 9.9 km long on the right bank of the River Douro, mostly underground. The line has 13 stations, of which 12 are underground - 8 cut and cover and 4 shafts and / or galleries).

[SEE ONLINE](#)