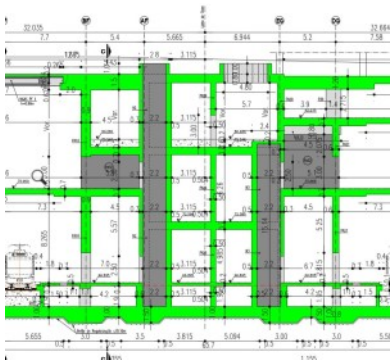
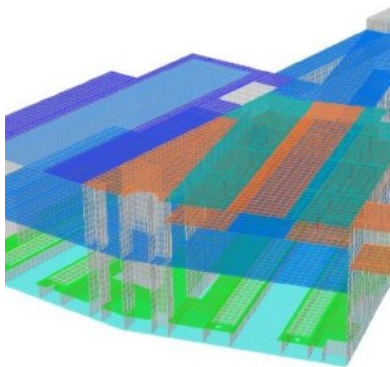




BOAVISTA / CASA DA MÚSICA METRO STATION

PRELIMINARY STAGE, CONCEPT AND EXECUTIVE DESIGN - STRUCTURAL ENGINEERING



Client: Metro do Porto – Project Division

Location: Porto, Portugal

Design date: 2018 - 2019

Design by: Daniel P. Sousa / Pedro B. Carvalho

Services: Preliminary Stage, Concept and Executive Design - Structural Engineering

Summary:

The future Boavista / Casa da Música (BCM) Station will allow the connection to Metro do Porto's current Casa da Música Station, and has independent boarding platforms for 2 new metro lines: the Circular line (to be built) and the Gaia line (planned), and will allow in the future to link Line C (Existing) and Line G-Circular (to be built) and Line D (planned). The station is subdivided into 6 zones: "Avenida de França Station", "Gaia Line Station", Station's Connection Module; North Atrium, South Atrium, South Gallery and West Access. BCM Station has an average depth of 24 m. Includes 2 connections to the existing station and 5 accesses to the surface. The Boavista / Casa da Música station occupies a total deployment area of 9 255 m² and a gross construction area of 40,560 m² corresponding to 6 different levels and has a total volume of 251 200 m³. It is estimated that the new circular line will be used on average by about 28,000 passengers / day.

[SEE ONLINE](#)